

HT23RTJX | Boom Lift

Working height

22.5m

Horizontal outreach

18.3m

Closed length	10.40m
Closed height	2.70m
Closed width	2.47m
Platform size	2.44m x 0.91m
Rotation	Continuous
Max SWL	230kg
Weight	13400kg
Reach Below Ground	4.00m

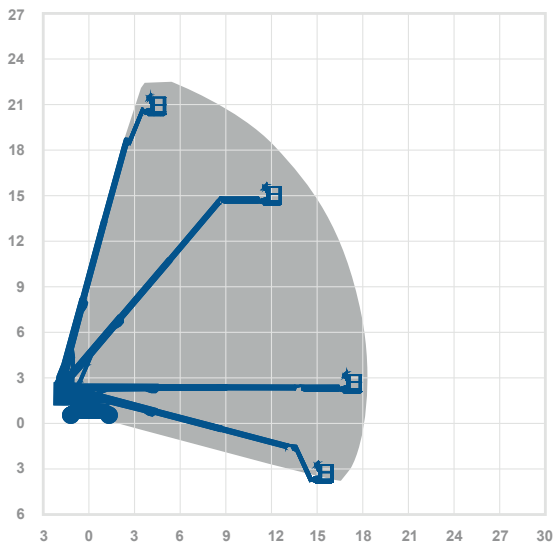
Alternative machines

S65X
66JX

Manufacturer

Haulotte

Working envelope



22.5m 18.3m

Standard features



Optional extras



0345 745 0000

nationwideplatforms.co.uk

 Nationwide
Platforms
A LOXAM Company

Understanding this Product Specification Sheet

This product specification sheet is designed to help you better understand the capabilities and key features of the piece of equipment and whether it will meet your requirements.

The working envelope with height/reach indicator provides a quick visual reference to assist your equipment selection.

If you are unsure about any aspect of this piece of equipment, or would like more information to assist with your selection, please call our expertly trained staff on **0345 745 0000**

Height and outreach

Working height Horizontal outreach

AMWP11.5-8100 | Boom Lift

Working height	11.2m	Alternative machines
Horizontal outreach	3m	Star10 Star10A
Closed length	2.85m	Manufacturer
Closed height	1.92m	Dirigi
Closed width	1m	
Rotation	345°	
Platform height	0.2m	
Max D1C	200kg	
Weight	2000kg	
Deck size	0.62m x 0.876m	

Working envelope

Standard features

-
-
-
-
-
-
-
-
-
-
-
-
-
-
-
-
-
-
-
-
-

0345 745 0000
nationwideplatforms.co.uk

Standard features

- | | | | |
|-------------------------------|-------------------|--------------------------|---------------------------|
| Battery power | IPAF licence type | Straight telescopic boom | Self drive |
| Diesel power | IPAF licence type | Non-marking tyres | J1B rotation |
| Lithium battery | IPAF licence type | Outrigger legs | IPAF driving licence type |
| Hybrid power | IPAF licence type | Maximum people in cage* | Power to platform |
| Duel fuel option | IPAF licence type | Push around vehicles | Generator |
| Gas power option | Tracked | Operator powered | |
| Rough terrain (2 wheel drive) | Mast boom | Indoor use only | |
| Rough terrain (4 wheel drive) | Articulating boom | Indoor/Outdoor | |

Optional extras

- | | | | |
|---------------|--------------|-------------------------------|----------------------|
| SkySiren® | SkyRakPlus® | SkyRakEdge™ | Generator |
| SkySiren® PCS | SkyRakBoom® | SkyShield™ | Camera pod |
| SkySentry® | SkyRakMulti™ | SkyScreen™ | Circular camera cage |
| SkyRak® | SkyTel™ | Material handling attachments | Wendy lighting frame |

*The number refers to indoor or outdoor uses. Call us for details.

Please note that all technical information referred to in this document is intended for guidance purposes only and does not act as a replacement for the manufacturer's specification or equipment user guides which should be referred to prior to placing your order. No responsibility can be accepted in the event that this document contains any errors, omissions or data that is different from that in the manufacturer's specification or equipment user guides.